

## Product Highlights

**Advanced Silicon/Graphite anode coupled with latest NMC cathode technology provides outstanding power delivery, even at -10°C**

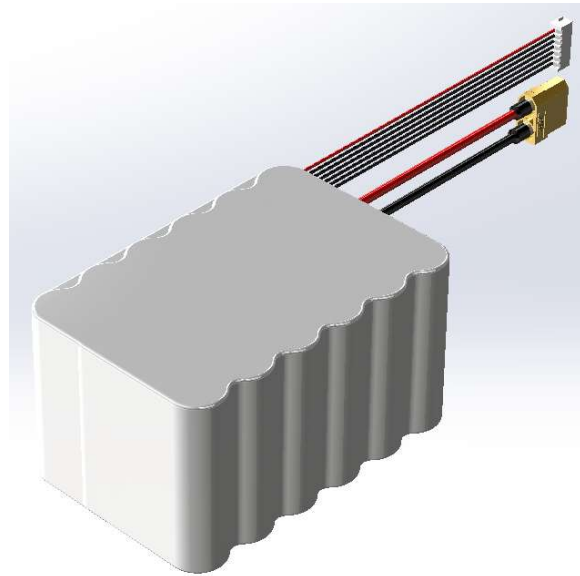
**Extended cycle life with protection circuit and optimized cell selection**

**Power connector options - XT-90, XT-60, or custom requests**

**UN 38.3 Approved in a CONUS ISO 17025 accredited test facility**

**Premium quality from an AS 9100 production facility**

Manufactured in an AS 9100 American facility, MPS Lithium-ion batteries provide the highest levels of performance as well as protection from over-voltage, over-current, over-temperature, and short circuit conditions. Leveraging the Molicel INR-21700-P50B high power cell and our custom Battery Management System (BMS), this 6S4P battery delivers the highest current, extended cycle life, rugged packaging, premium quality, and UN 38.3 agency approvals.



## Electrical Specifications & Approvals

Nominal Voltage (V)	21.6
Minimum Voltage (V)	15
Nominal Capacity (Ah)	20
Continuous Discharge Current (A)	240
Pulse Discharge Current, 3 sec's (A)	360
Maximum Charge Voltage (V)	25.2
Maximum Charging Current (A)	100
Watt-Hours (Wh)	432
Shipping Classification	Class 9
Agency Approvals	UN 38.3

## Mechanical Specifications

Weight (g)	1724
Dimensions (length, mm)	128
Dimensions (width, mm)	87.5
Dimensions (height, mm)	70
Energy Density (Volumetric, Wh/l)	489
Energy Density (Gravimetric, Wh/kg)	242
Operating Temperature Range	-20°C to +60°C
Storage Temperature Range	-40°C to +60°C
Operating Humidity	20% to 80%
Power Connector	..., XT60, XT90
Charging Balance Connector	JST-XH 6S
Part Numbers	6S4P-M-XT60, 6S4P-M-XT90